



The Underline

An accessible, deployable, open source planter concept that allows the 'greentrification' of derelict, underutilized underpass space in our cities.

In cities that are so deprived of space, why is there so much of this?



Brooklyn Queens Expressway - Brooklyn, NYC

What if we could do more?

Make what is a waste of space, source of pollution, and overwhelmingly inhuman -

into a *delight*

Plant mix

Shade plants:

Solomons soal

Liriope with flowers

hellebores

mondo grass - black mondo

hostos

creeping jenny



Sun plants:

Mint

Cone flowers

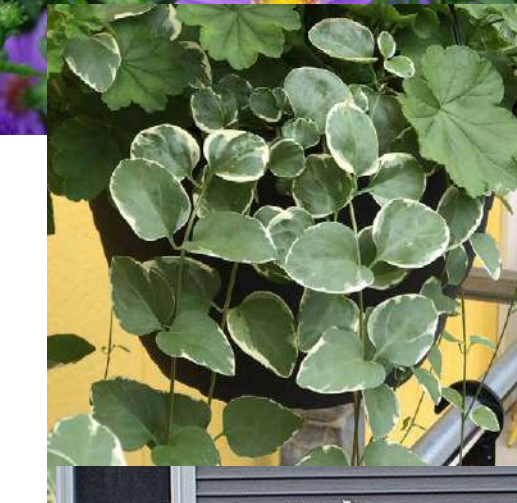
Black eyes susans

gawra

aster

vinca vine

Montawk daisy



Cacti and succulents:

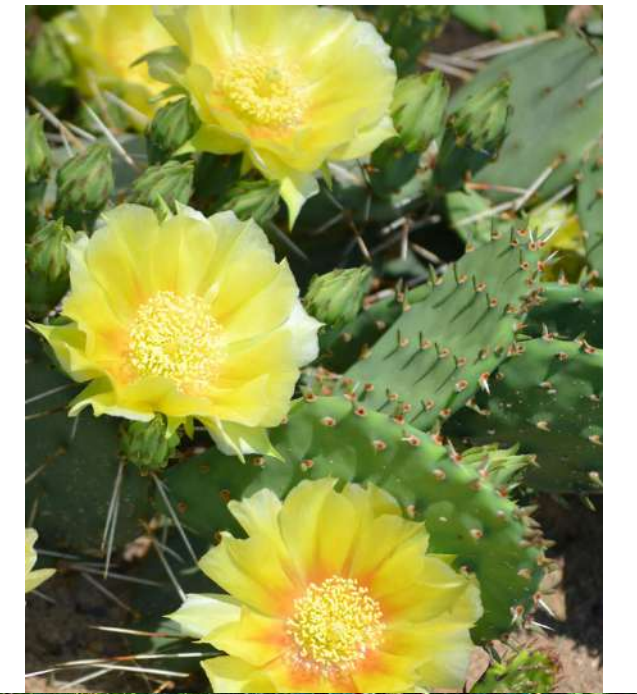
Eastern prickly pear

Stonecrop

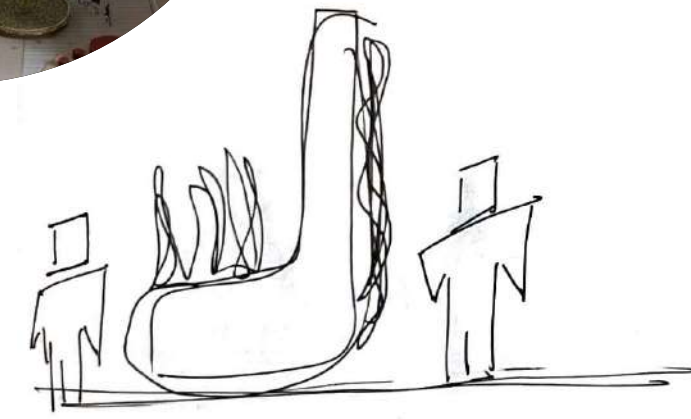
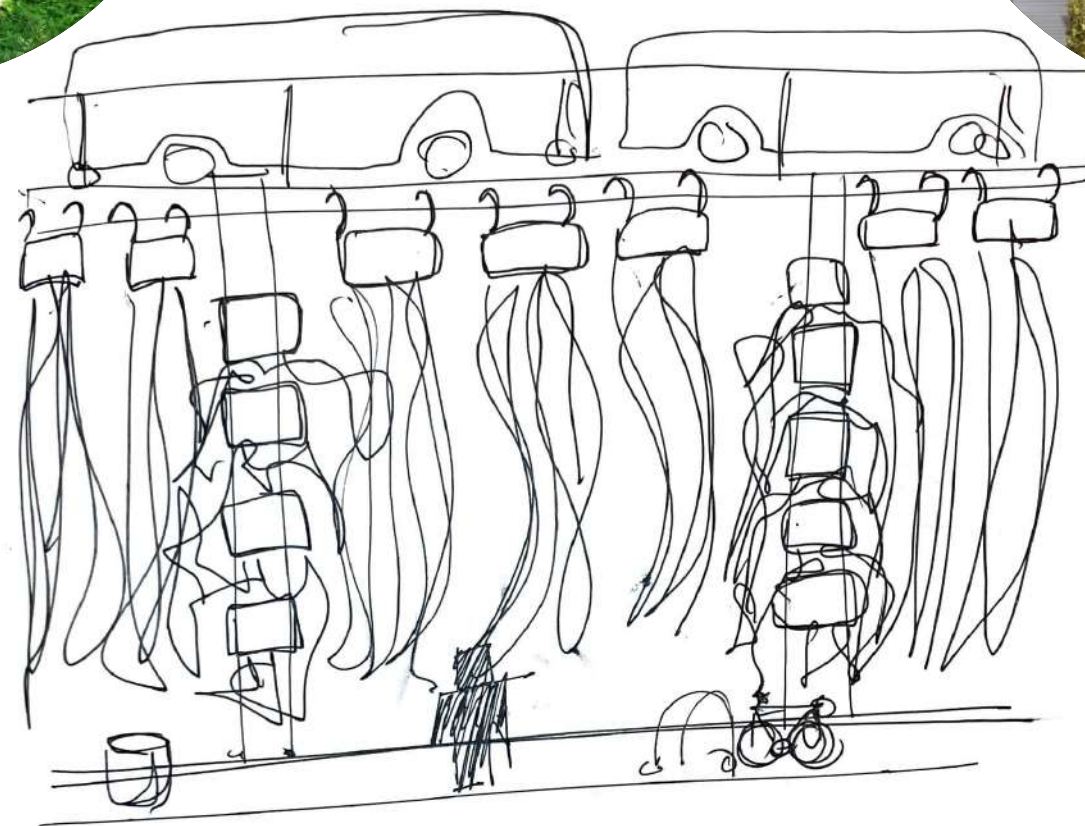
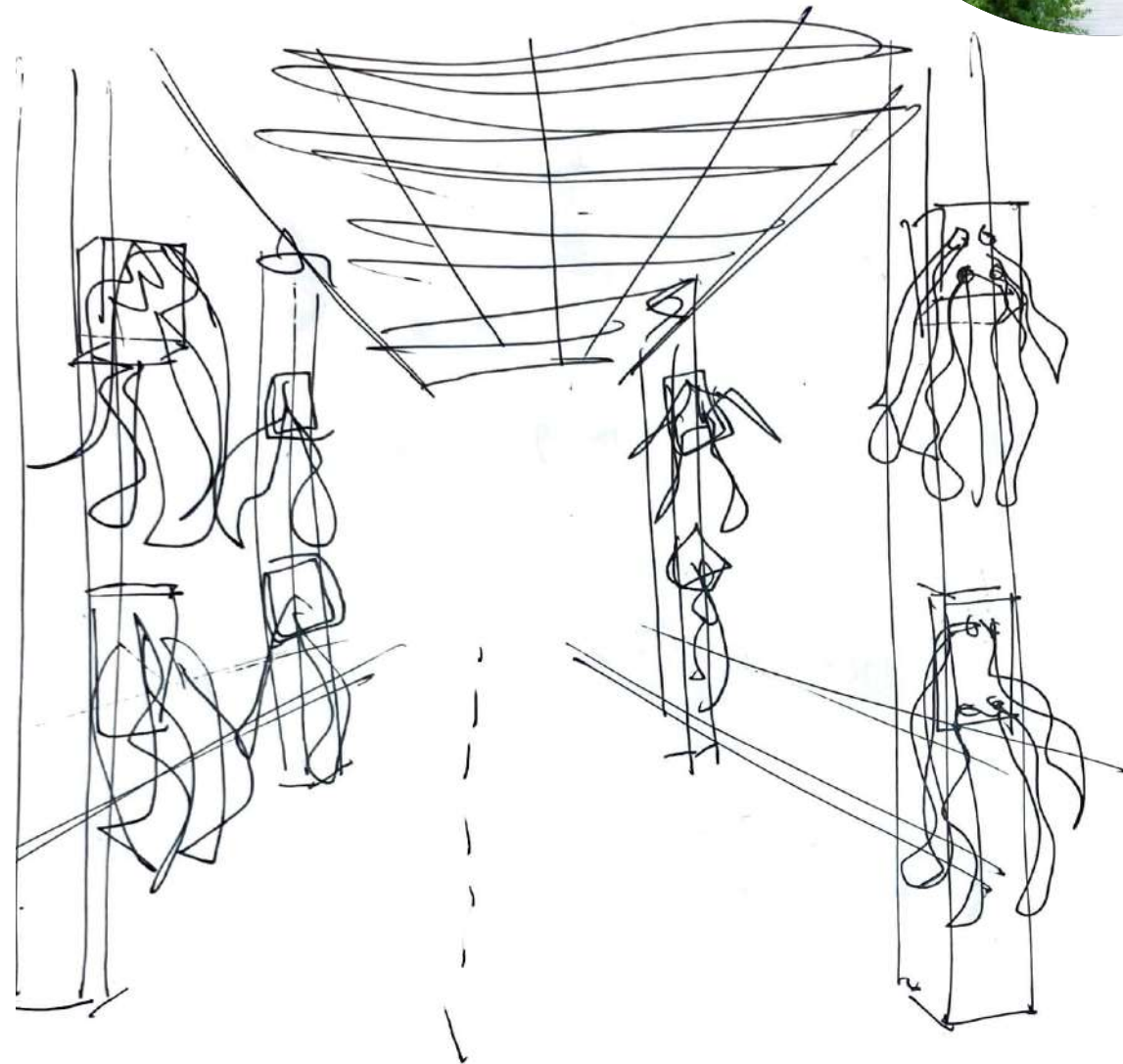
hens and chicks

Escobaria vivipara

Delosperma cooperi



Planter V1



PLANTERS

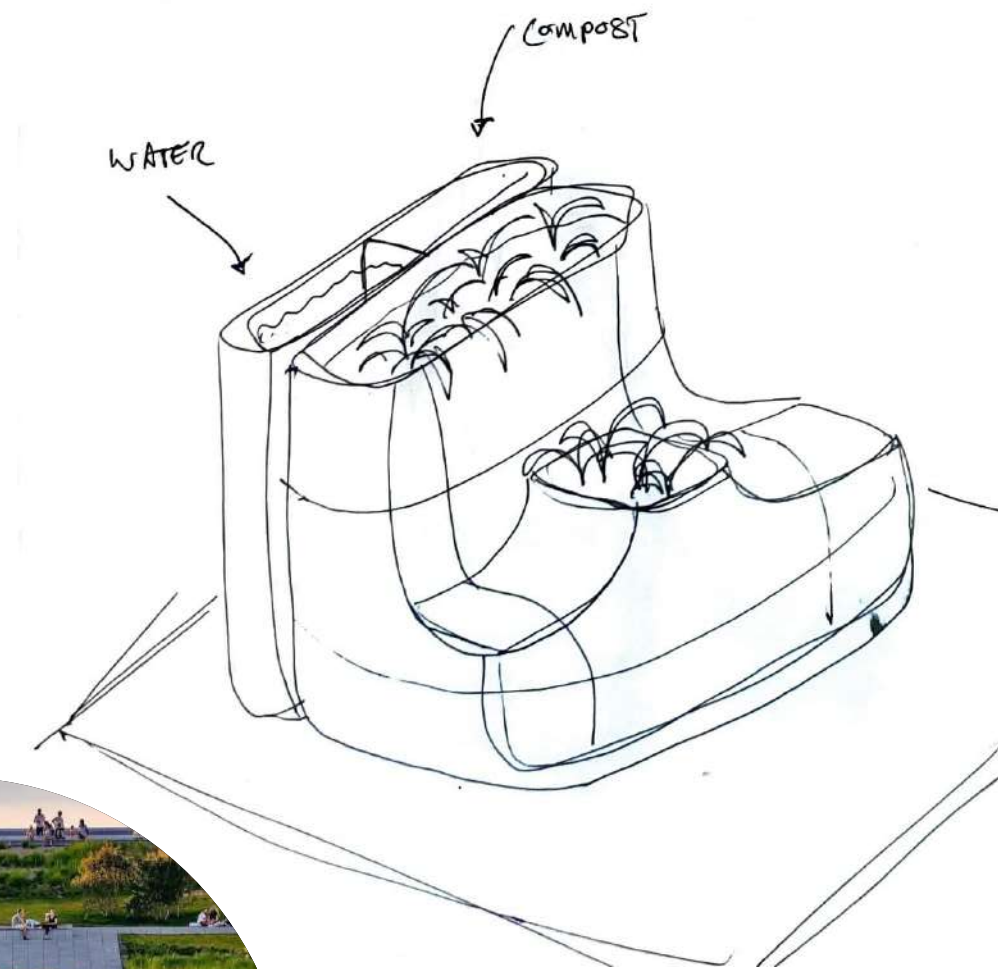
SCREEN

SIDE.

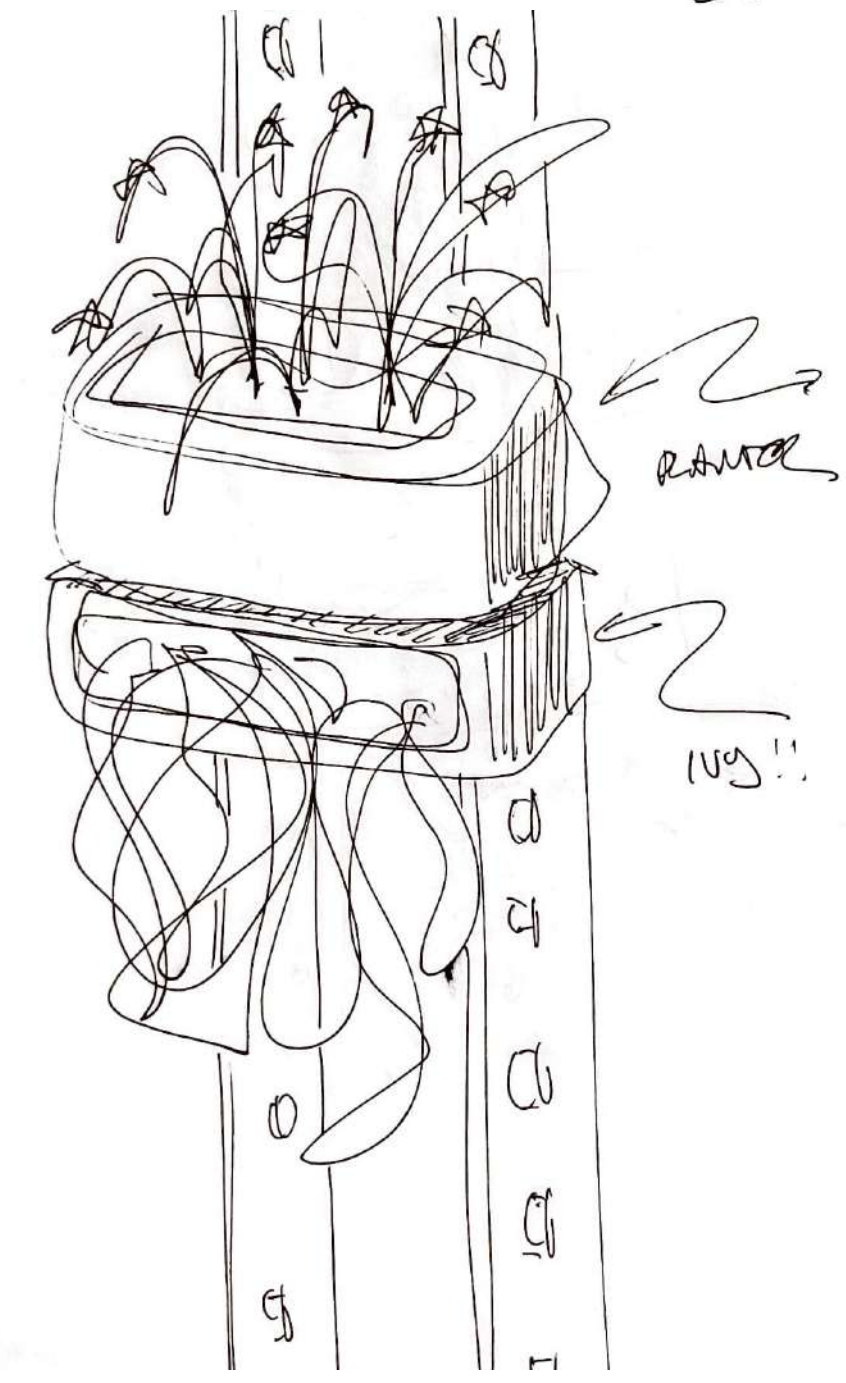
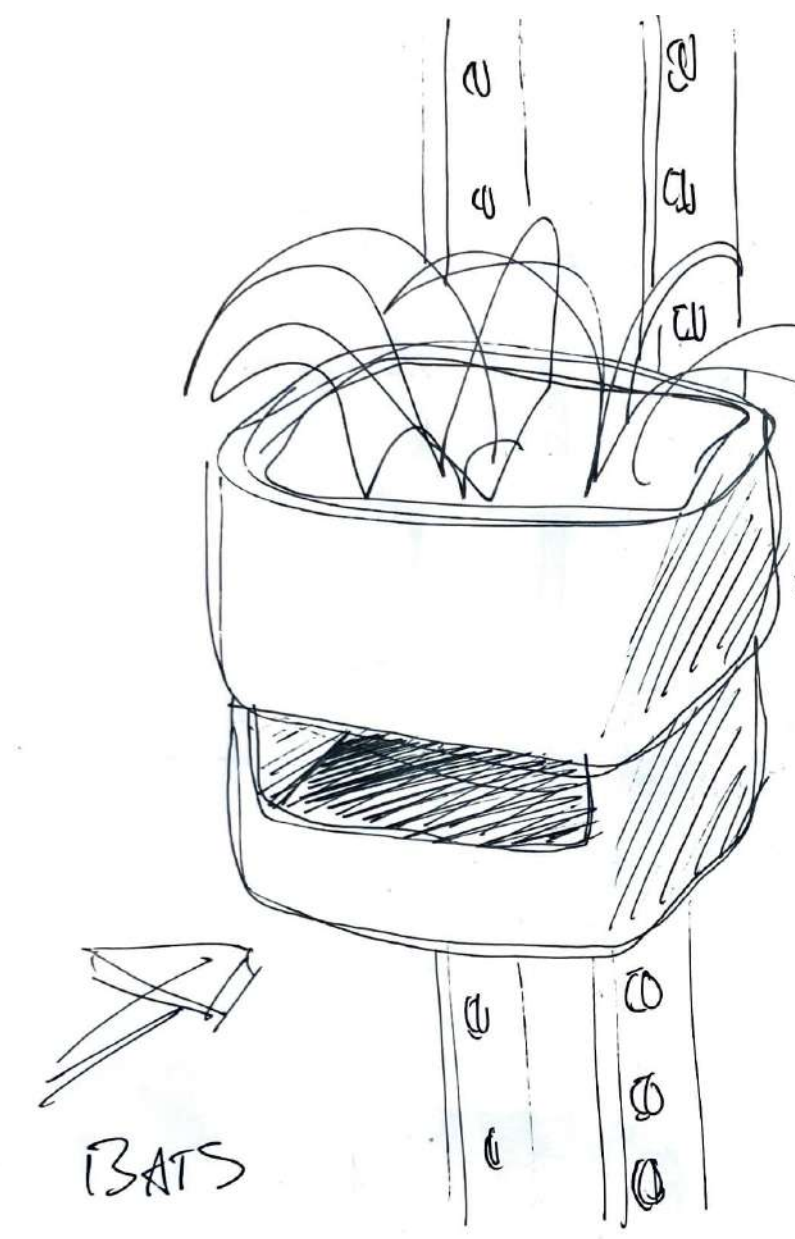
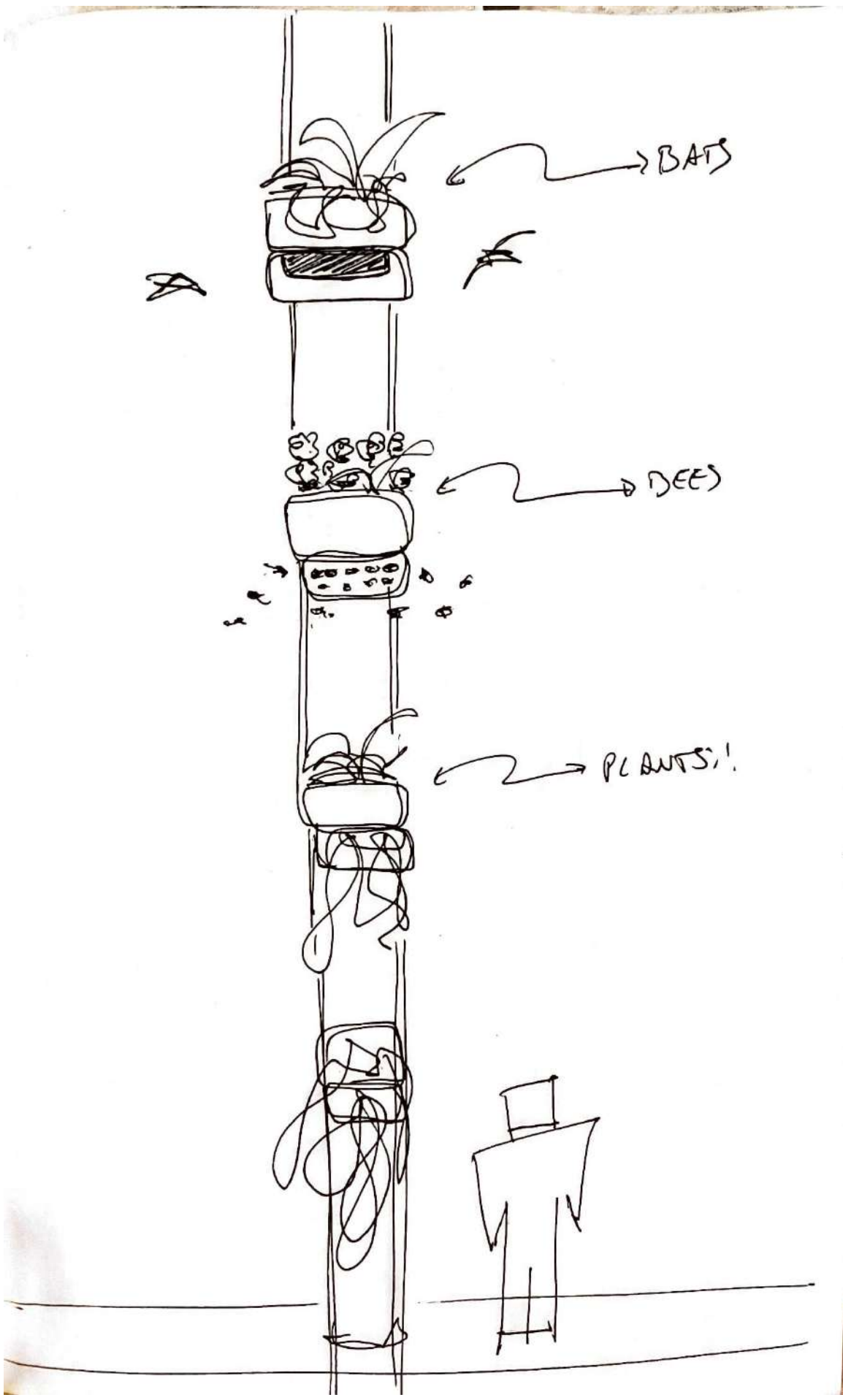
GARDEN ECOSYSTEM CHAIRS

LOW WATER USE

MORE INTERVENSON



Planter V1



Guerrilla Testing





Studio 3 - Shaun Fynn



Global production and the UN SDG's

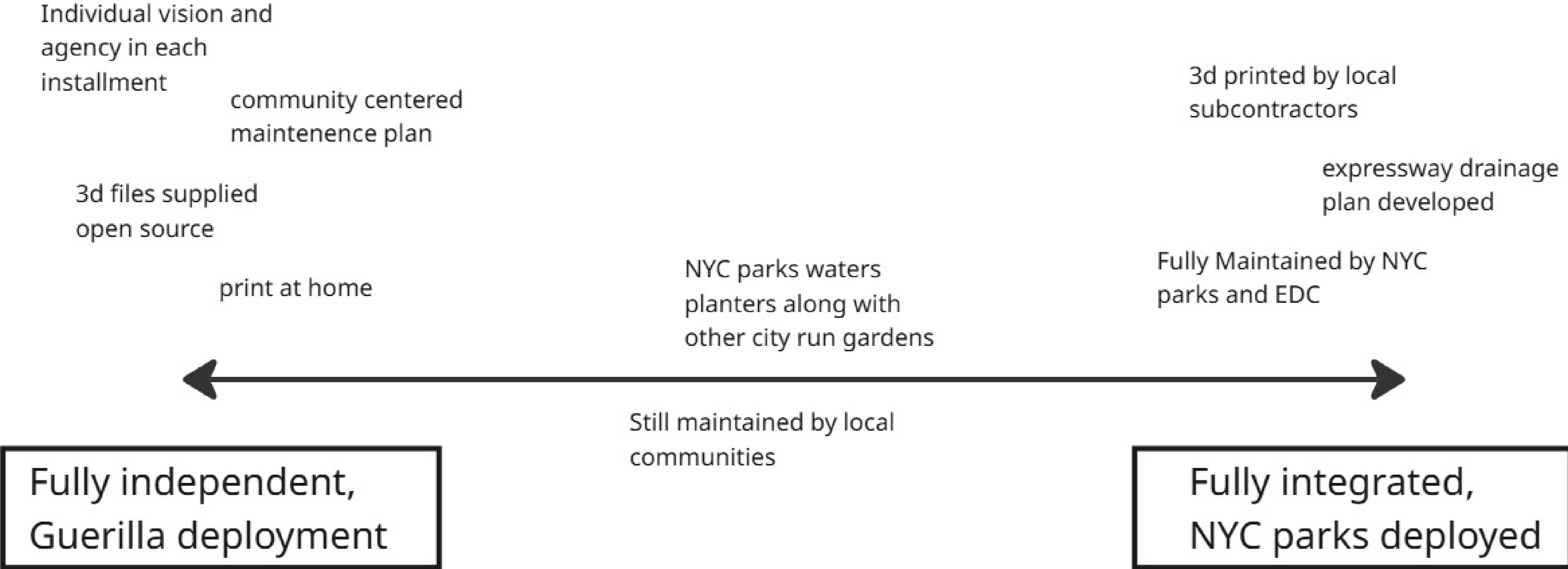


Eliot Wolfert

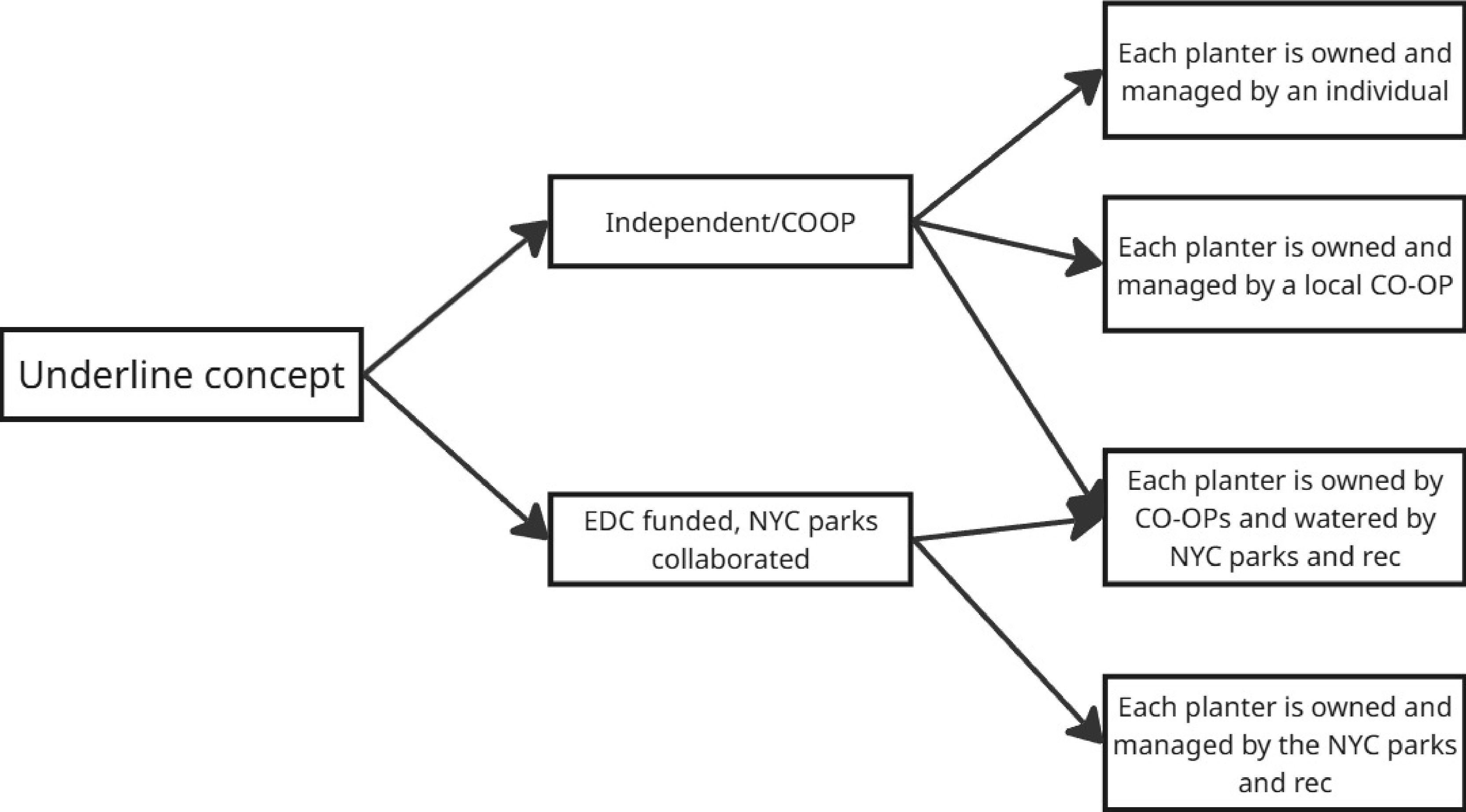
Guerrilla Testing



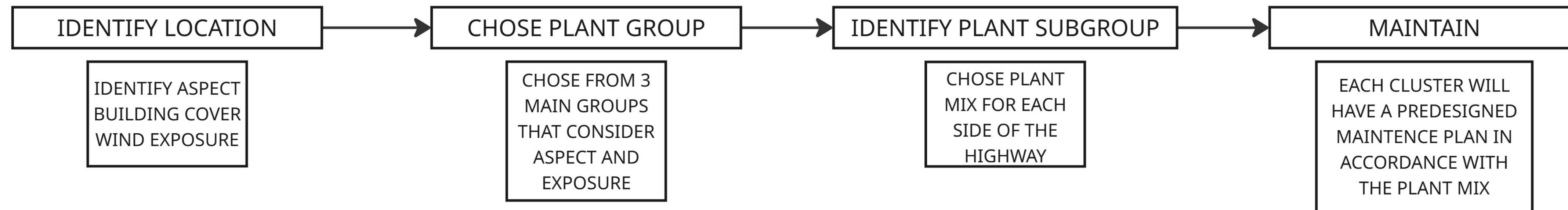
Flexible deployment



Flexible deployment



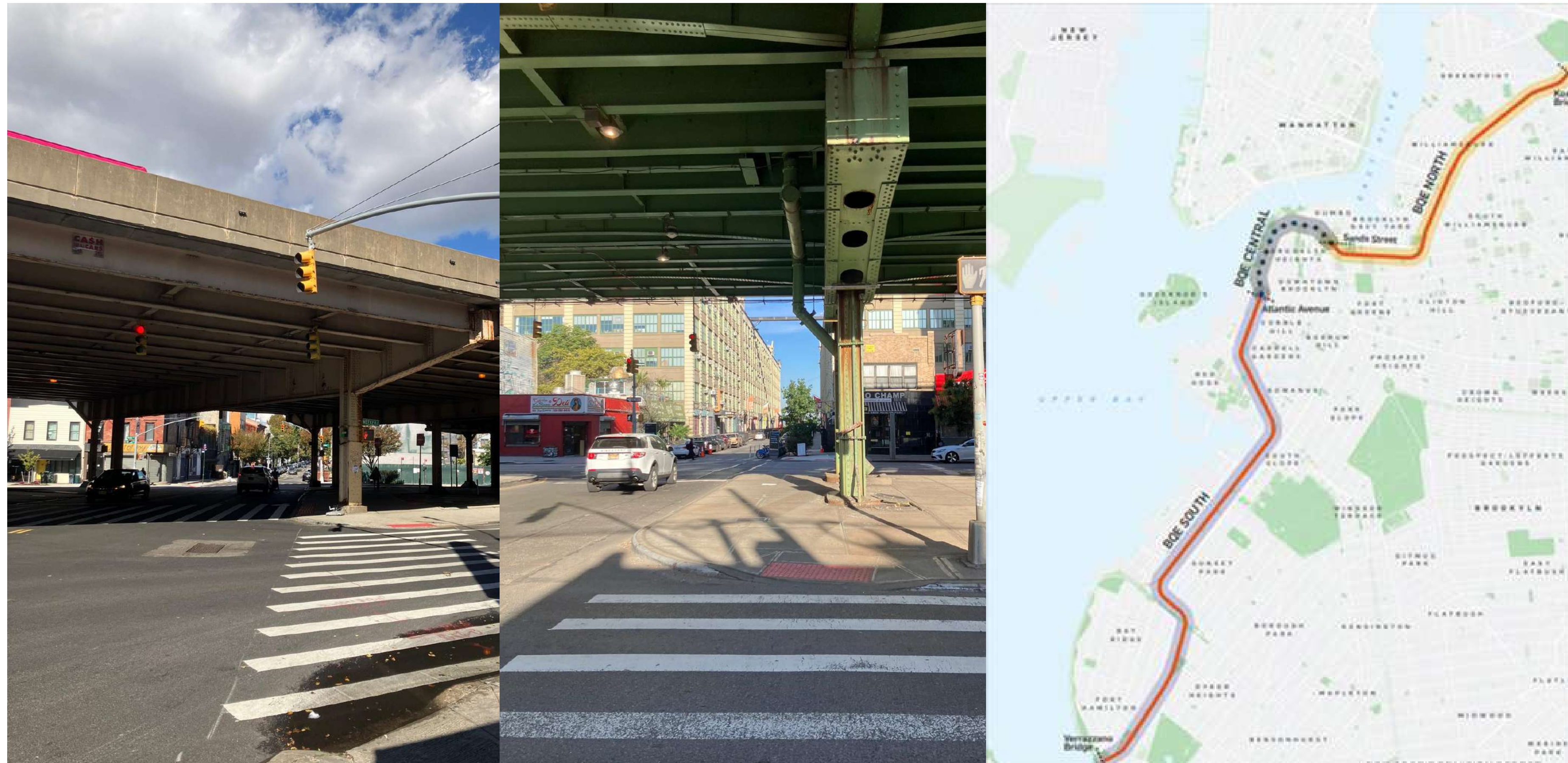
How to deploy:



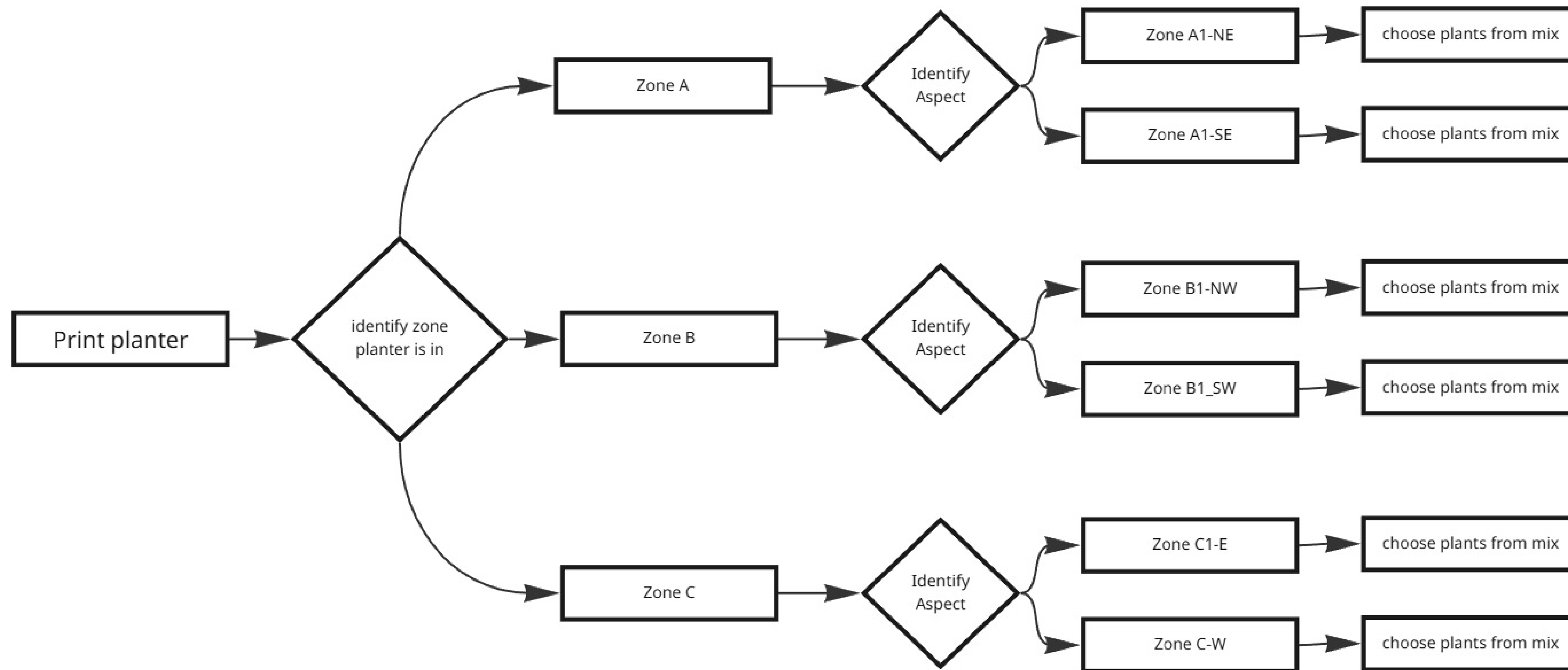
one size does not fit all

what plants will thrive in some areas does not mean they will work in others. what was once a lush ecosystem in the 1700's is now as far away from that as one could have imagined.

The city and even blocks, are split into extreme micro climates, making planting hard, and very site specific. Aspect is a large factor but changes with light blockage by buildings, which can make what would theoretically be a sunny spot a not at all sunny spot. Areas also twist and turn making even the theoretical aspect zones change dependent on place along the bqe. this means most spots, block to block, have to be treated case by case



Identifying plant mix

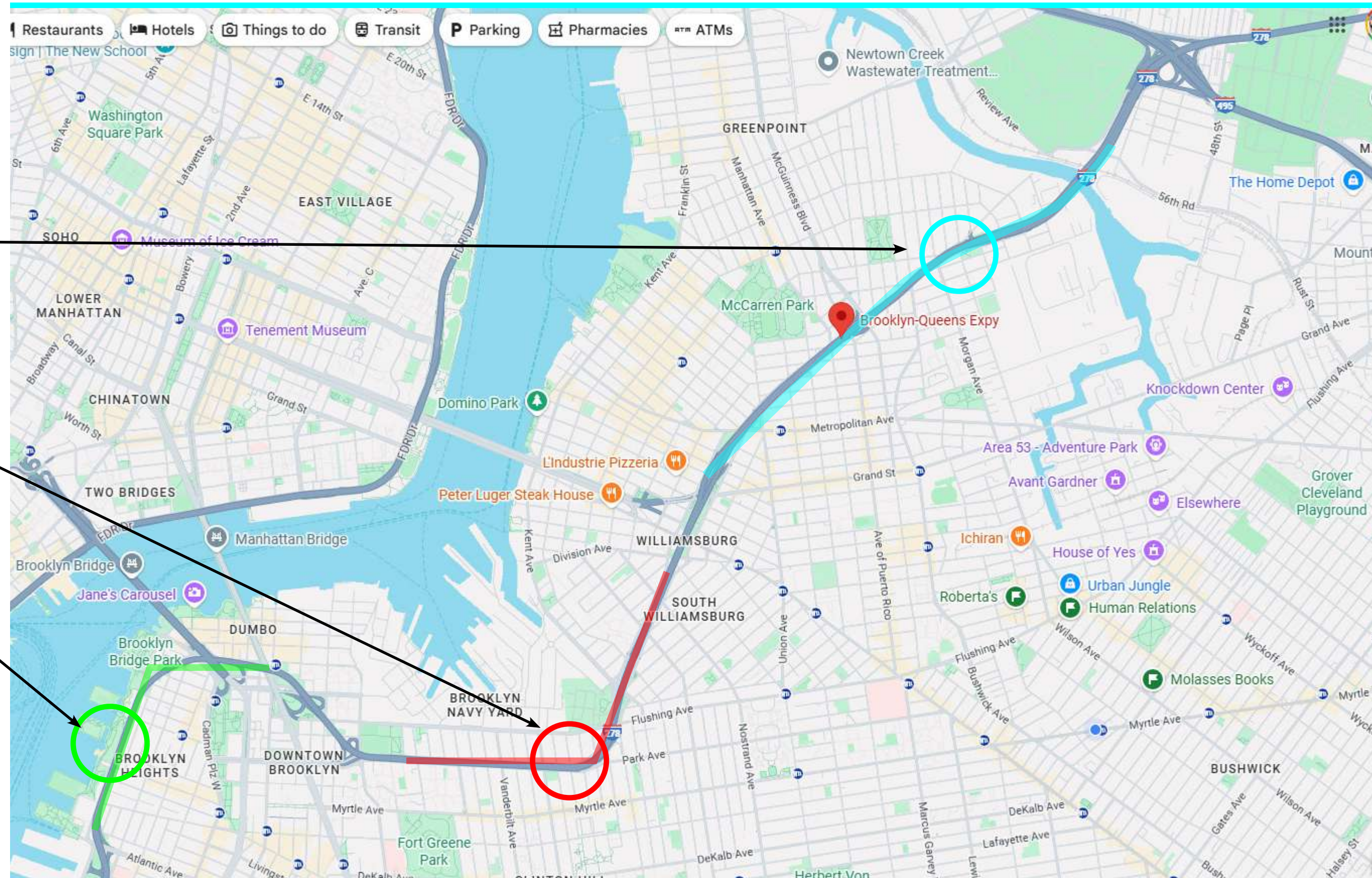


Example: plant zones

Zone A:
Plant mix 1N+1S

Zone B:
Plant mix 2N+2S

Zone C:
Plant mix 3E+3W

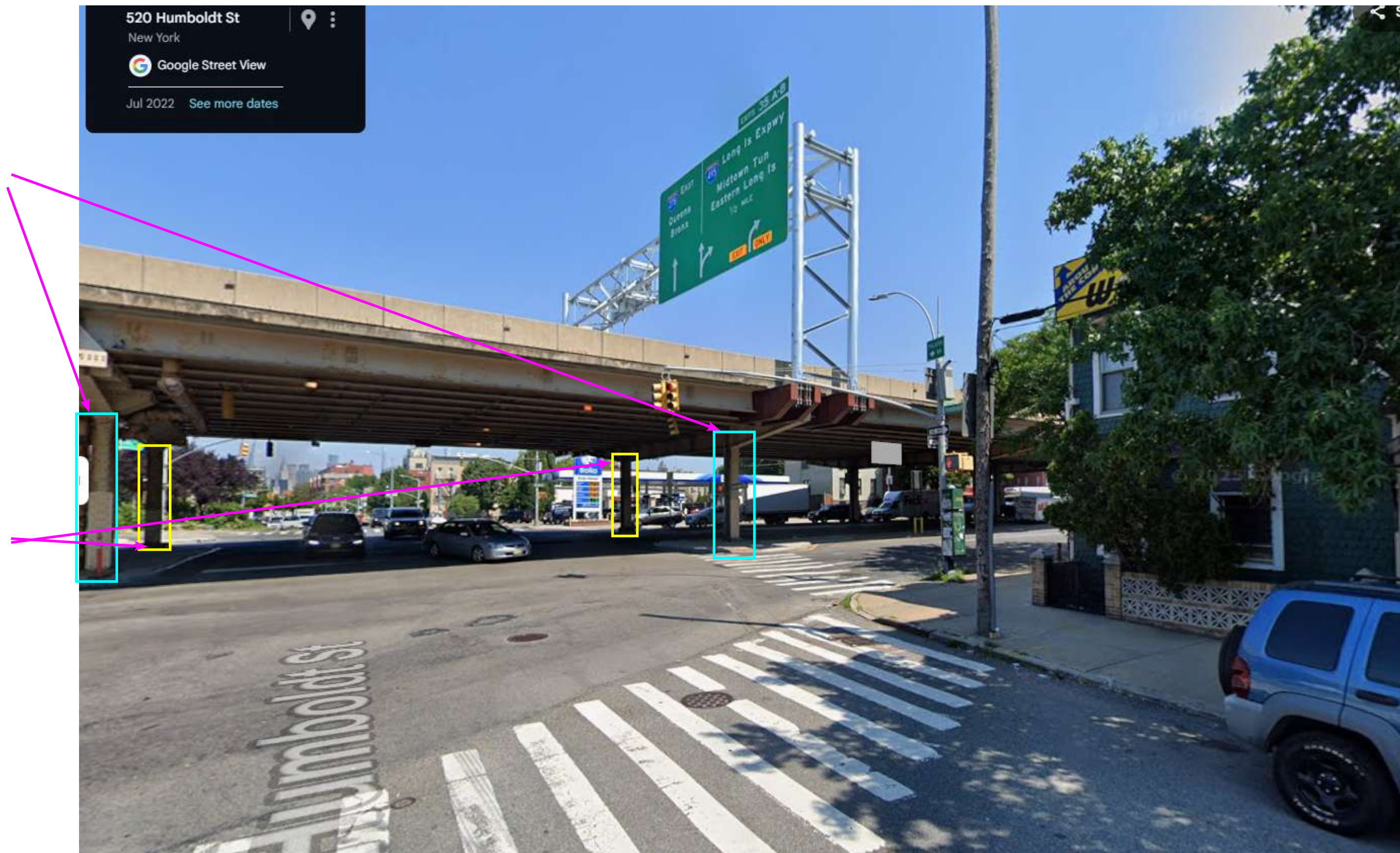


Worked example

Good building clearance makes this intersection a good candidate for a 'A section cluster'.

SE section gets great morning light with good early afternoon sun as well. This would be a great candidate for plant mix 1S, comprised of mostly sun loving plants. This side would require more watering, with watering every 1-2 days in the summer being a must

NW section gets good evening light but less so than the SE, so plant mix 1N would be selected for the aft side. Watering would be needed every 4-5 days in the summer since they get less dried out than their SE facing counterparts.



Contextual deployment

A-1NE



Loriapi



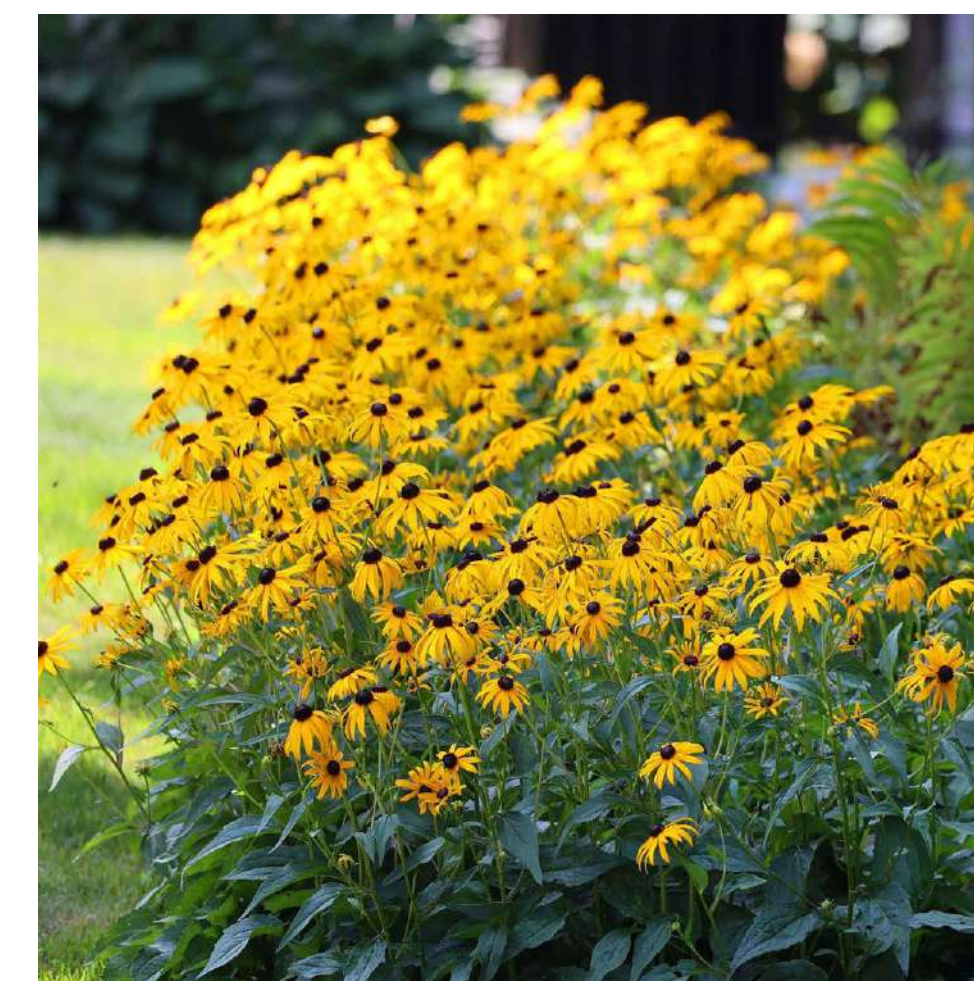
hostas



A-1SW



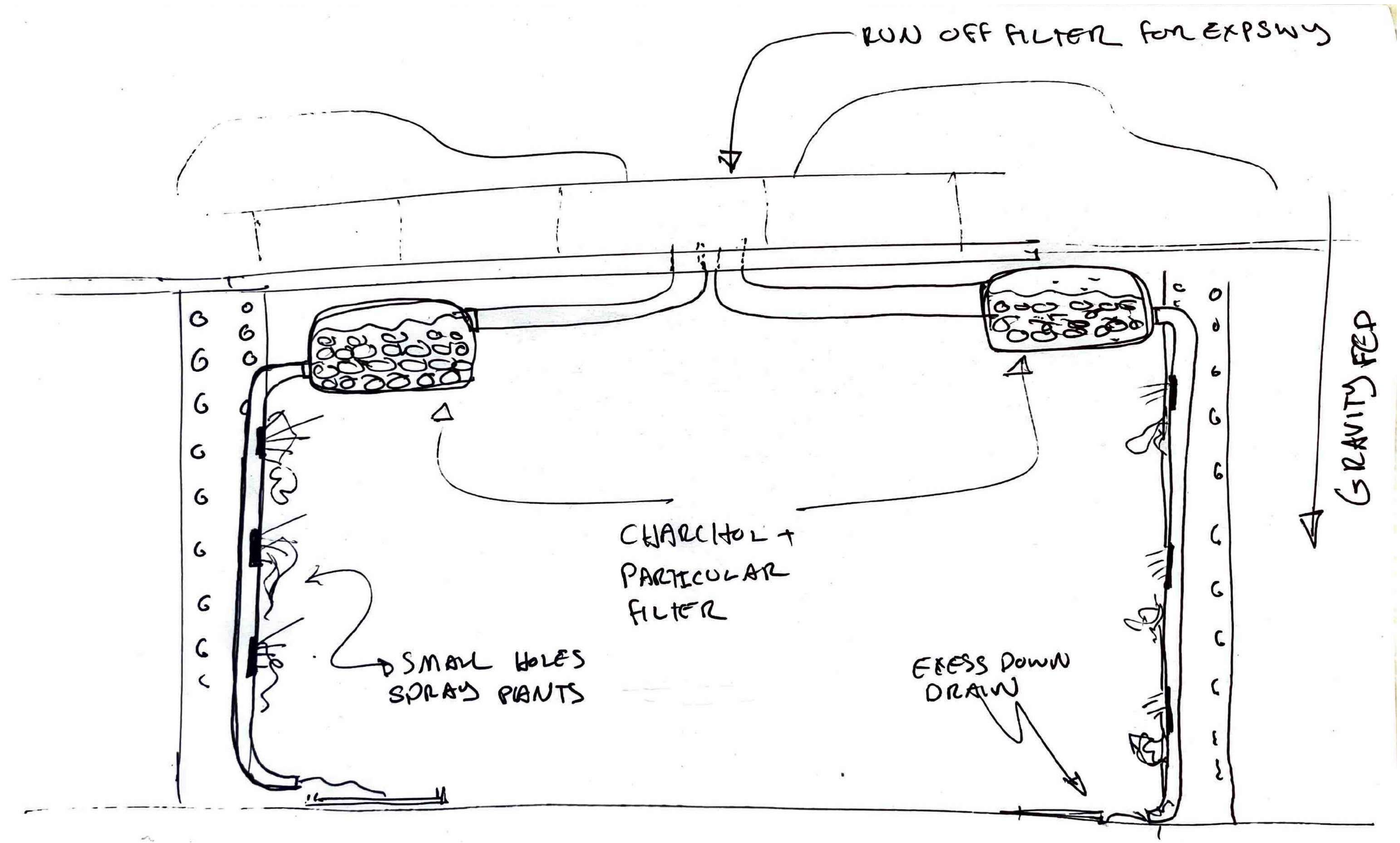
Montauk Daisy



Black eyed susans

Watering system - investigation





Existing drainage

Granular filter

Added down pipe

Sprinkler nozzles

Misting + water

Planters



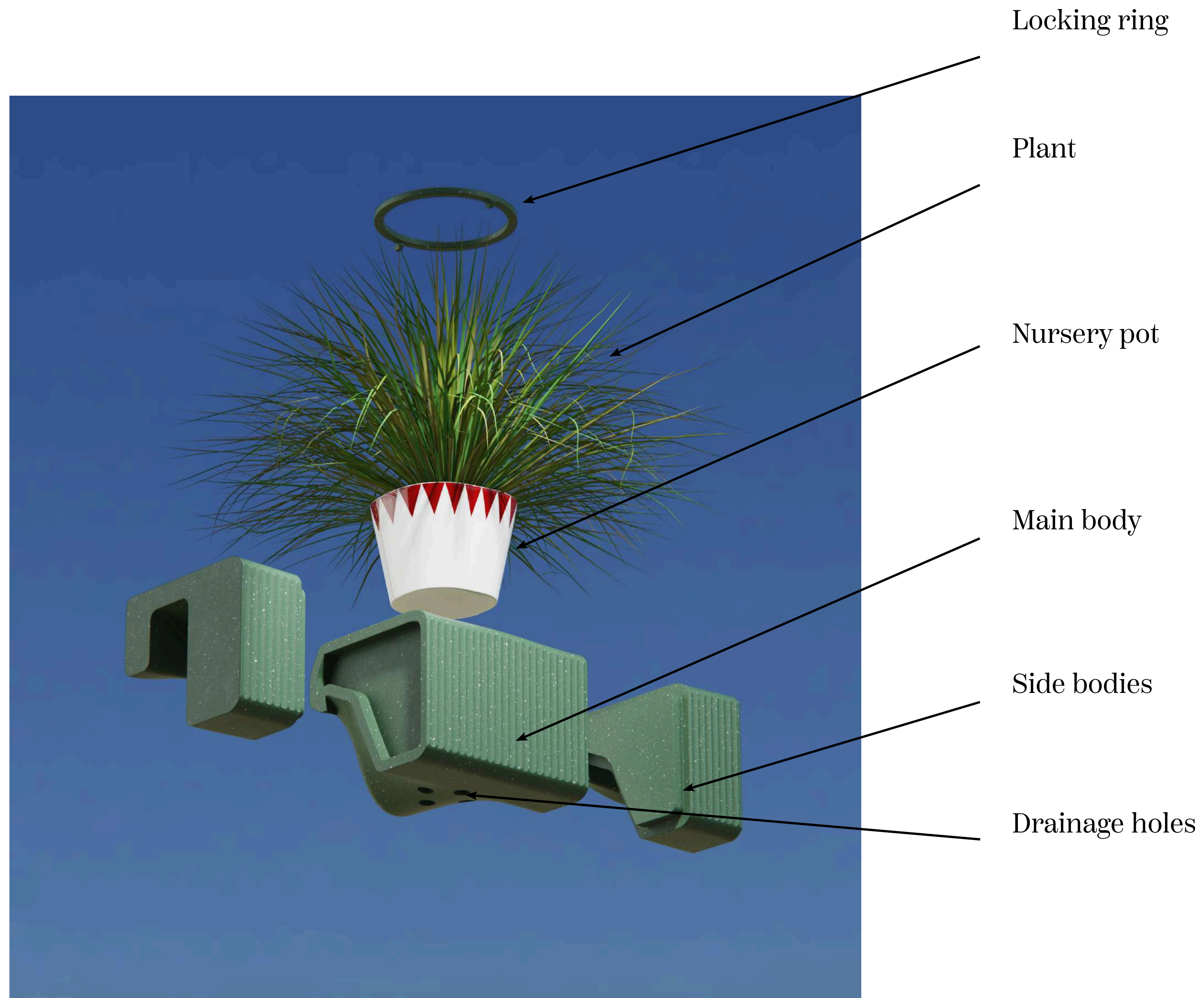
Rain gardens and filters - examples

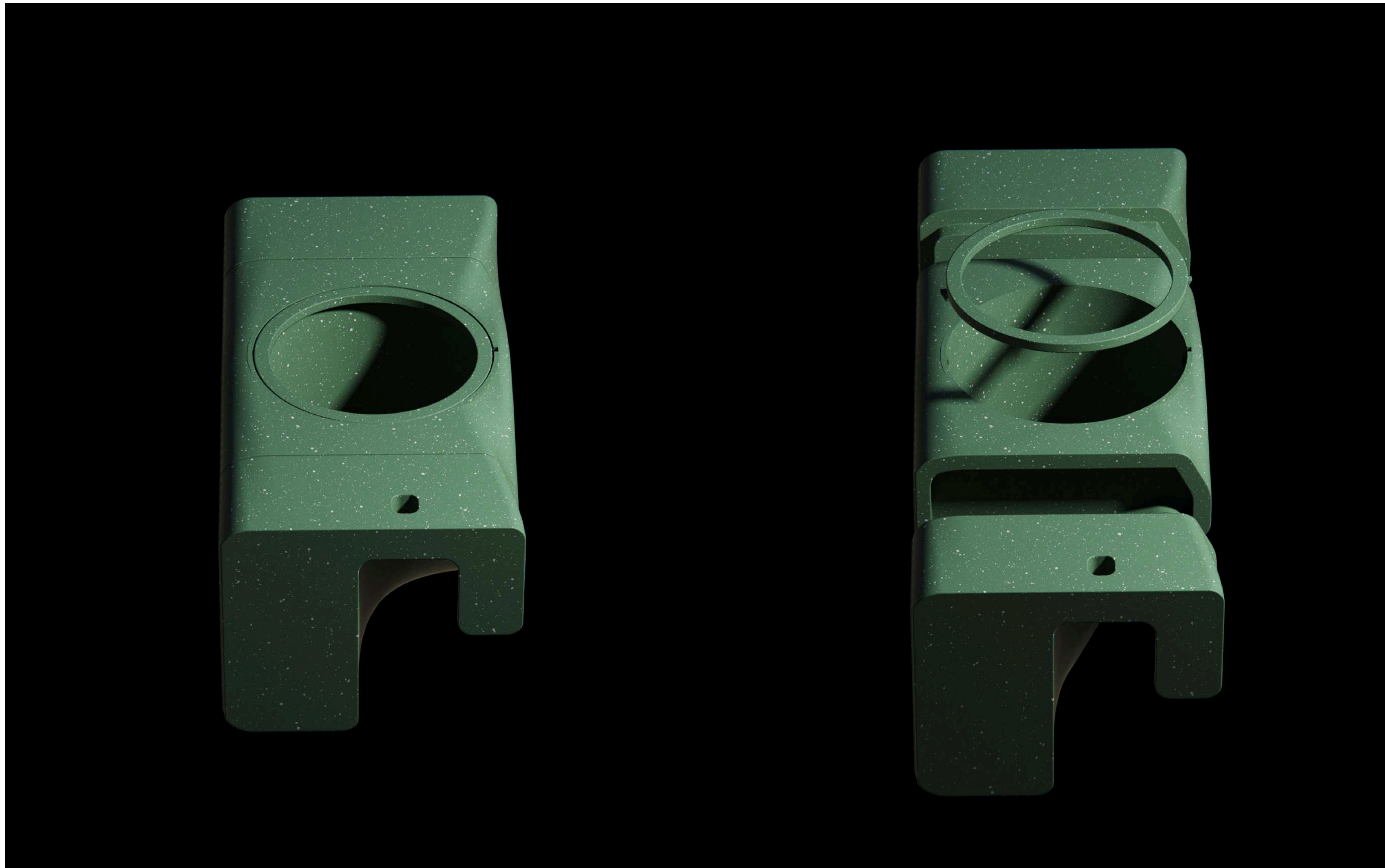


Rain gardens can improve your street by reducing ponding, providing summer shade, and greening your community. Most importantly, rain gardens improve the environment by allowing rain to be naturally absorbed into the ground instead of flowing into the sewer system.

Planter exploded view

Able to be printed without supports, on two plates for a strong but light 380 gram build.





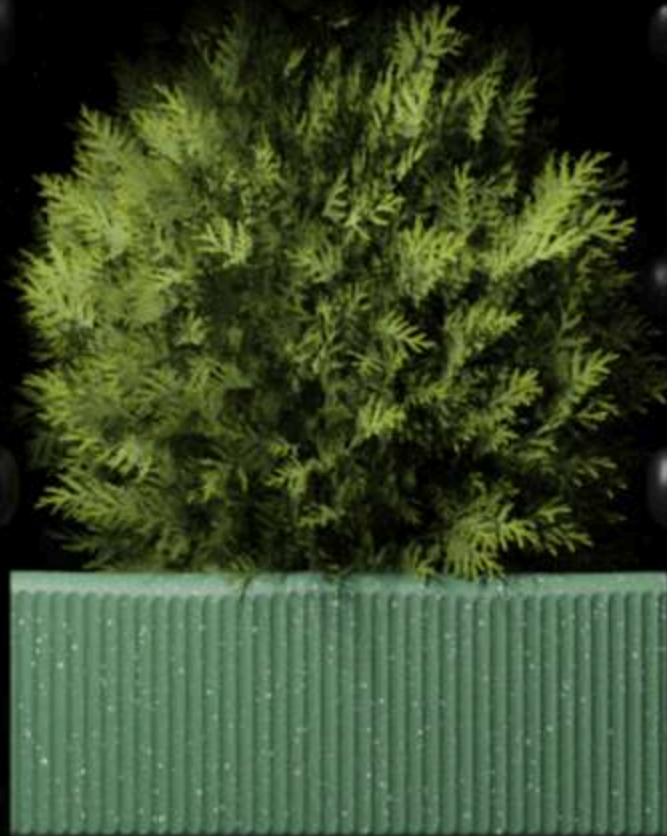


Hardy grasses box

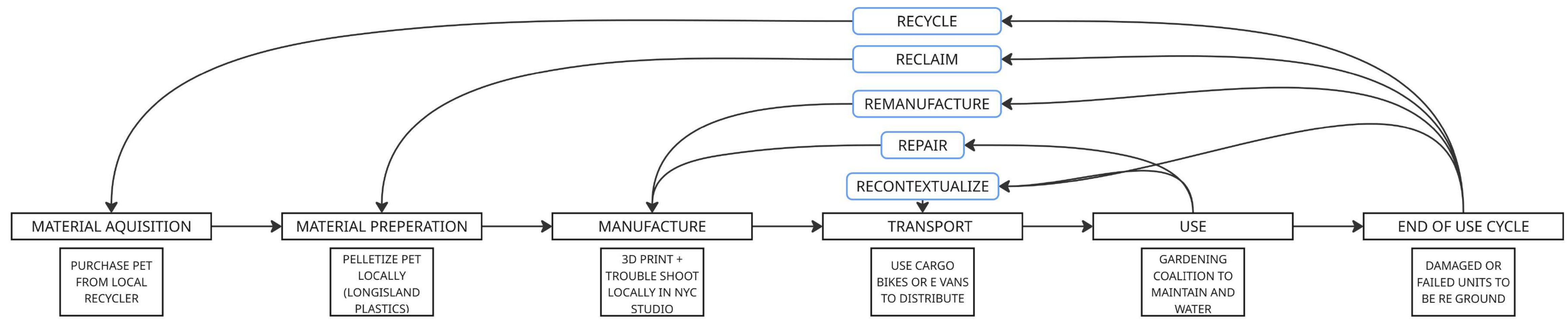
Wild flowers + bee box

Perennial flowers





Importance of context and system - PET

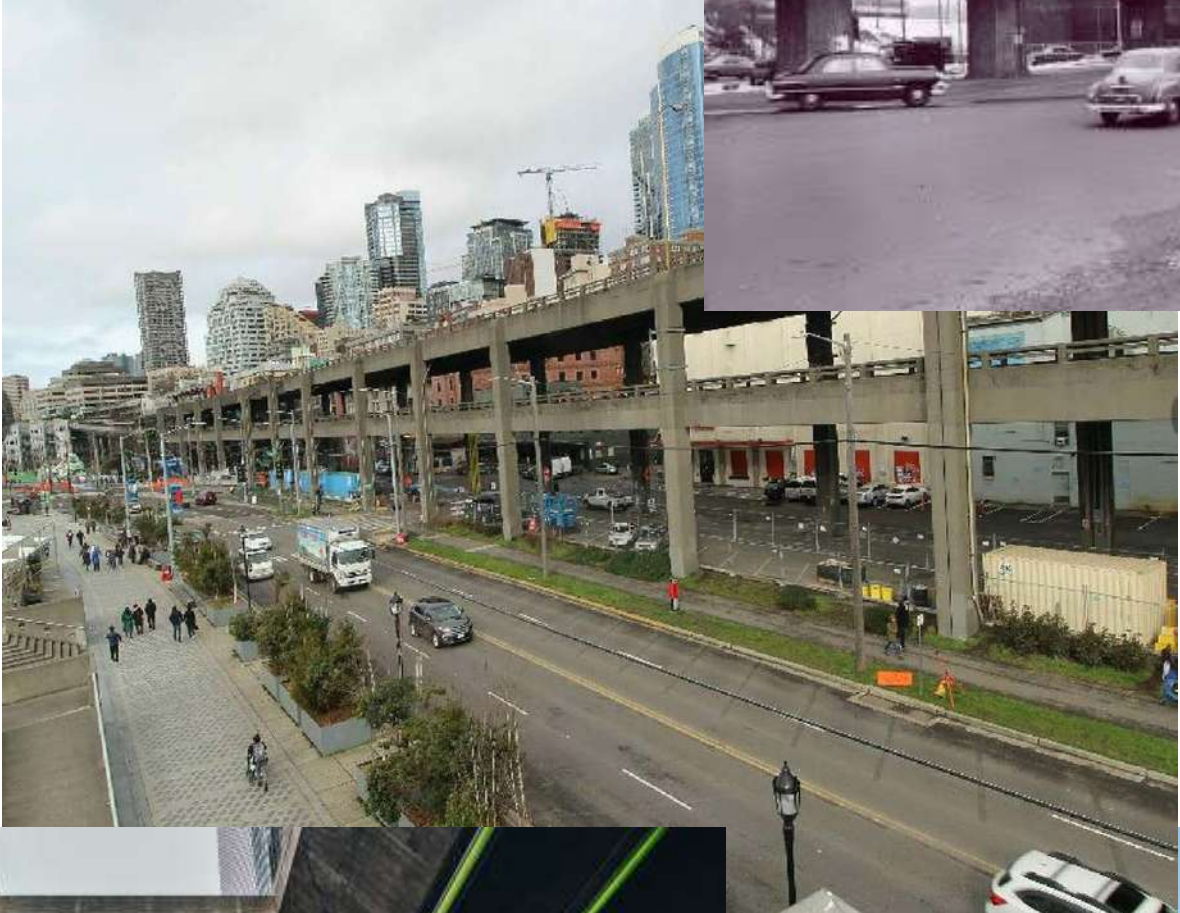


Locally developed, globally applicable

Same framework different city! from Minniapolis to Houston, unused over pass spaces are readily available and begging for care and attention.

While its not a cookie cutter solution, its better. It accepts that the world is not a one size fits all, and within infrastruc-ture, specific care should be taken to make each project fit as well as it can.

With that being said, this frame work, these planters outline an easy, and digestible way to revive derelict spaces under freeways in three easy steps to ensure your commu-nity is well and adequately served



Inspiration images - what it could become...

